

Glendale Gateway Trust Annual General Meeting

28th November 2025
7pm, Cheviot Centre




1	Welcome
2	Apologies for Absence
3	Minutes of Previous AGM
4	Matters Arising
5	Appointment of Trustees
6	Declarations of Interest
7	Presentation of the Accounts
8	Report from the Chair of Trustees
9	Update on the work of GGT
10	Questions

Finance Report @ 31 March 2025



- The financial statements have been examined by our independent examiners – JH Greenwood and there are no areas of concern. I would like to ask the Trustees to approve the reappointment of JH Greenwood at the same level of fees as this year.
- The year to 31 March 2025 was all about raising funds to save the post office and investing in our properties. We also obtained funding for the addition of the generator at the Cheviot Centre to ensure we can still function during power cuts and extreme weather conditions.
- Balance Sheet – @ 31 March 2025 we have fixed assets totalling approx. £2.6 million, which is a mixture of freehold and leasehold properties. There is a small loan from Quaker Housing Trust – the balance is now £35k - this will be repaid over the next 10 years of interest free payments.
- Net current assets are mainly cash, made up of restricted funds of £208,000 and unrestricted of £223,000.

Finance Report @ 31 March 2025

- We will continue to increase our reserves to meet our liabilities. A major expenditure for this year will be the refurbishment of 42-44 High Street (Post Office building) to turn it into accommodation for local residents, along with the refurbishment of the Post Office Shop.
 - Income – we received approx £250,000 in donations and grants during the year (£71,285 of this was from the generosity of the public, Lord Vinson and Barmoor Wind Farm to save the Post Office), We also received a loan from Wooler Parish Council to help purchase the Post Office. We received funding from the Lottery for the Rural Aspirations role and funding from NCC for the Rural Advocate role. We would also like to thank the public for their continued support in funding the food bank. We also received funding from Barmoor Wind Farm and NCC to enable us to convert the bathroom downstairs in the Cheviot Centre into an accessible bathroom.
 - Operating income increased to £248,000 – mainly due to the increased use of the Cheviot Centre.
 - Expenditure – we continue to spend a substantial amount on property maintenance to ensure all of our properties are fully compliant
 - Net income increased to just over £76,000 for the year, of which £35,000 has been designated towards the Post Office refurbishment
- 

Glendale Gateway Trust Annual General Meeting

28th November 2025
7pm, Cheviot Centre



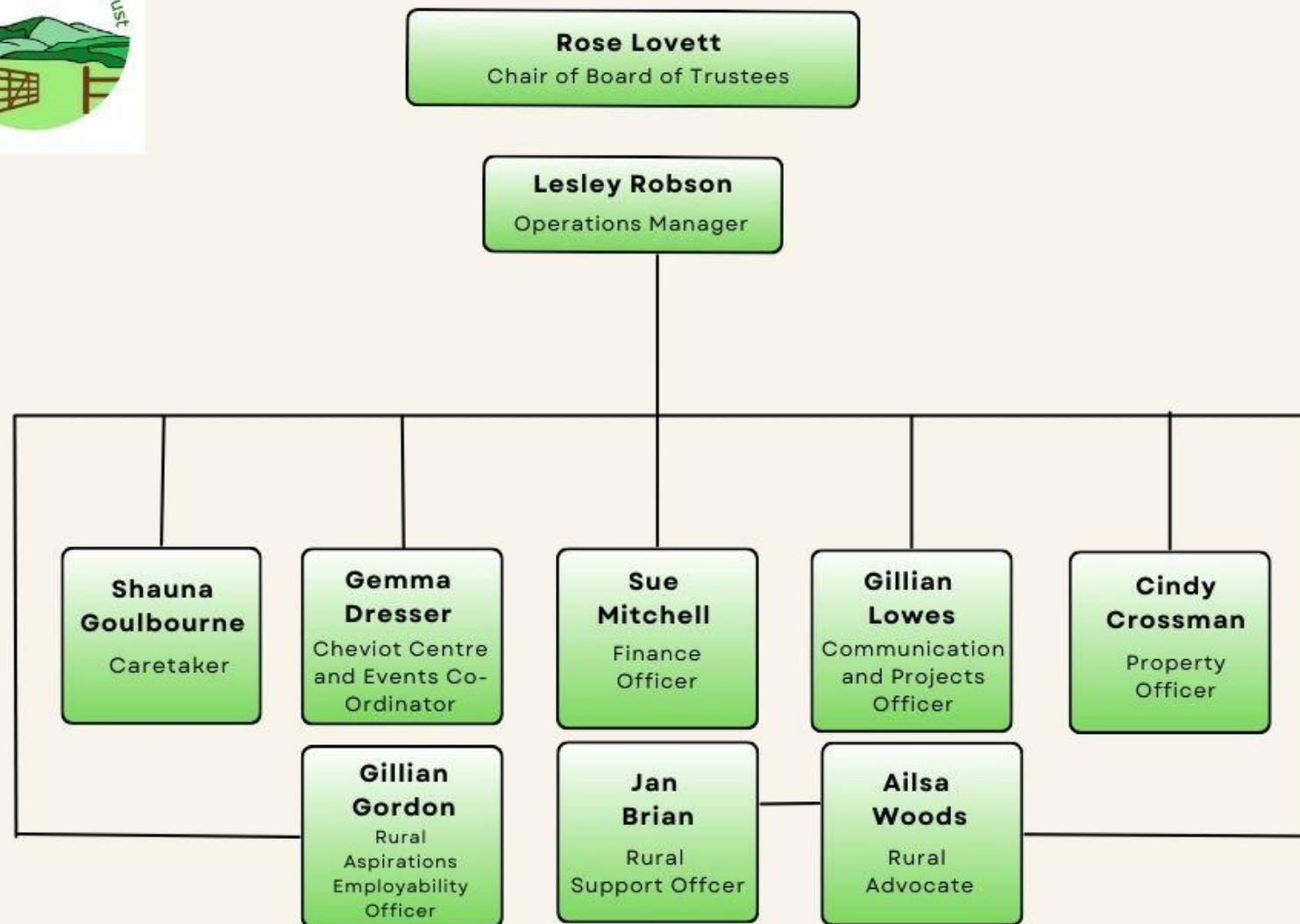
1	Welcome
2	Apologies for Absence
3	Minutes of Previous AGM
4	Matters Arising
5	Appointment of Trustees
6	Declarations of Interest
7	Presentation of the Accounts
8	Report from the Chair of Trustees
9	Update on the work of GGT
10	Questions

Wooler Post Office





Organisation Chart





Rural Advocacy

All residents of Glendale:

- Are aware & informed of the support available to them
- Can access the help they need, regardless of where they live
- Feel connected to statutory, voluntary & community sector services
- Feel heard & included in rural policy and decision making
- Feel engaged & invested in their community



Project Touchpoint



- ☐ **Casework Referrals** - entry point to complex support pathways
- ☐ How does it work?
- ☐ **Touchpoint partners** – helping us reach further into rural areas
- ☐ **Helped over 70 individuals/households in first year** – varying degrees of complexity including: Housing, accessing healthcare & social care, benefits/entitlements, energy, financial support, managing money & debt relief, improving living standards, safety at home, living with long-term illnesses or limited mobility, accessing grant funding to alleviate hardship, log bank & food bank referrals and other general tasks such as household administration support.
- ☐ **Network partners** - to seek long-term sustainable solutions: NCC Safe & Resilient Communities, Adult Social Care, Care Prevention team, SSTs, Citizen's Advice, AGE UK, Dementia UK, Parkinsons & various NHS teams (Mental health & Social Prescribers)
- ☐ **Communities First:** Working with our strategic partners at NCC to capture all those touchpoints & journeys that feed into wider prevention strategy. Also shows impact of Rural Advocacy project. Rural Advocacy report to NCC - funding for a 4th year?

Looking Ahead to 2026....



- **New Team:** Rural Advocate & Rural Support Officer alongside our Rural Champion Volunteer
- **New initiatives:**
 - “Bridging the Gap”
 - Community Outreach programme
 - Working with Rural Aspirations on new project around life skills development for young adults
 - Citizen’s Advice First Aid Training – advice point at GGT
 - Continue with Project Touchpoint – reaching out to new partners

Thanks to all Touchpoint & network partners, our Rural Champion volunteer & NCC for funding for another year

Rural Aspirations



Supporting people in the Glendale Area with Employment, Education, Training or Volunteering.

We help individuals create CVs, practice interview skills, apply for jobs, find Education, Training and Volunteering opportunities in the area.

We advertise all local jobs and opportunities on our Facebook Page.

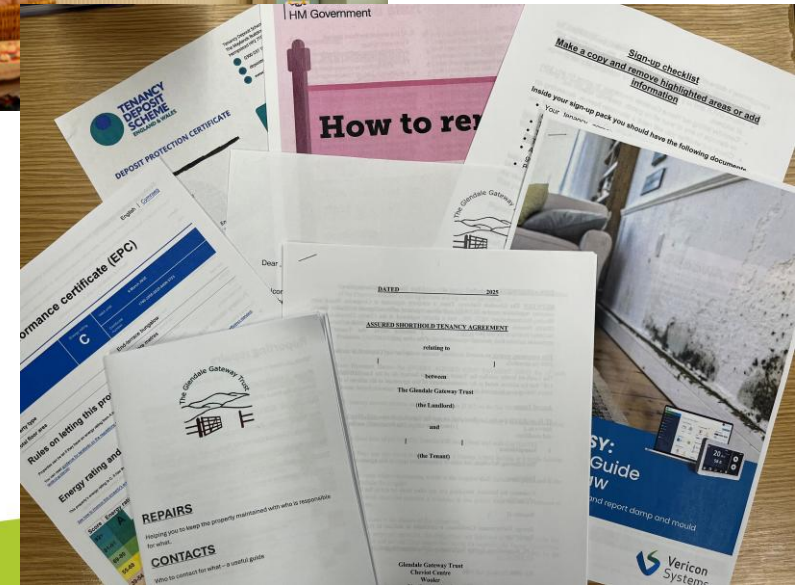
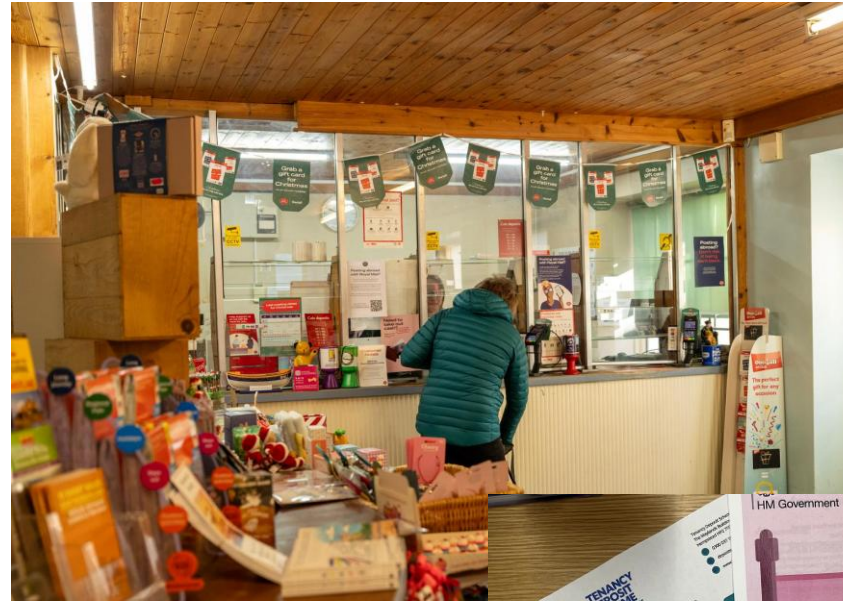
So far, We have supported 87 individuals, helped various students with transport to get them home safely and funded 7 people to help them back into Employment and Education.

Rural Aspirations is a partnership project funded by the National Lottery Community Fund and delivered by The Glendale Gateway Trust, Bell View, and Community Action Northumberland (CAN)



Properties

- Tenancy Pack
- Darcy's 21 High Street
- Flat (42 High Street Post Office)



Cheviot Centre & Events



- Activities
- Policies and procedures
- North Northumberland Log Bank
- Any other Cheviot Centre Business

Communications & Projects

- GGT Website & Social Media
- Visitor Information Centre
- Repair Café Rendezvous
- Relationships with local partners & community groups
- Team Collaboration





GGT Operations - What does 2026 have in store?

- **Finances** – robust and sustainable
- **Projects & Partnerships** - collaborations, new opportunities, influence policy from a rural perspective
- **Cheviot Centre** – thriving community hub
- **GGT Team** - continuous learning & development
- **Community** – connected & listening

GGT is progressive and responsive to community needs; delivering solutions & services; trusted partner; committed to resilient, thriving communities across Glendale.

Glendale Gateway Trust Annual General Meeting

28th November 2025
7pm, Cheviot Centre



1	Welcome
2	Apologies for Absence
3	Minutes of Previous AGM
4	Matters Arising
5	Appointment of Trustees
6	Declarations of Interest
7	Presentation of the Accounts
8	Report from the Chair of Trustees
9	Update on the work of GGT
10	Questions



Thank you

Any Questions?